



**Building the structure  
for a sustainable future**

[parapet.ro](http://parapet.ro)

## Projects in the European countries

## Portofolio

**250**

Projects

**17**

Countries

**1.000**

**MWp**

Installed

# We are actively participate in all stages of the PV Plant construction



PULL-OUT TESTS



PREPARATION OF DOCUMENTS FOR  
AUTHORISATIONS



TECHNICAL ENGINEERING: CIVIL,  
MECHANICAL AND ELECTRICAL DESIGN



PROCUREMENT



INSTALLATION OF PHOTOVOLTAIC SYSTEMS



AS-BUILT DOCUMENTATION



COMMISSIONING



# EPC and BoS

## CTP Logistics Park -

2022

MW installed: 4,2 MW

Scope of Work: full scope including engineering, procurement,



## WDP Industrial Park - 2023

MW installed: 3,2 MW

Scope of Work: full scope including engineering, procurement, construction and commissioning



## EATON - 2022

MW installed: 1 MW

Scope of Work: Roof, layout and mechanical mounting structure and panel mounting



## NIMET Precision Plant -

2022

MW installed: 6,8 MW

Scope of Work: Roof and soil, mechanical supply and assembly of



## Antibiotice Iasi - 2023

MW installed: 2,57 MW

Scope of Work: full scope including engineering, procurement, construction and commissioning

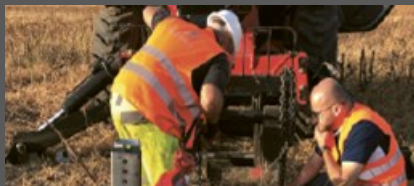


# Mechanical Works & POT

## Green Energy Consultancy and Investments - 2022

(Vulturu / purchased by Electrica)

Ramming/Drilling: Ramming



## PNE SOLAR - 2022

Ramming/Drilling: Ramming



# First Hybrid power plant built in Romania for research reasons

## INCDTIM Research Center - 2023

MW installed: 1 MW

Scope of Work: Full scope EPC

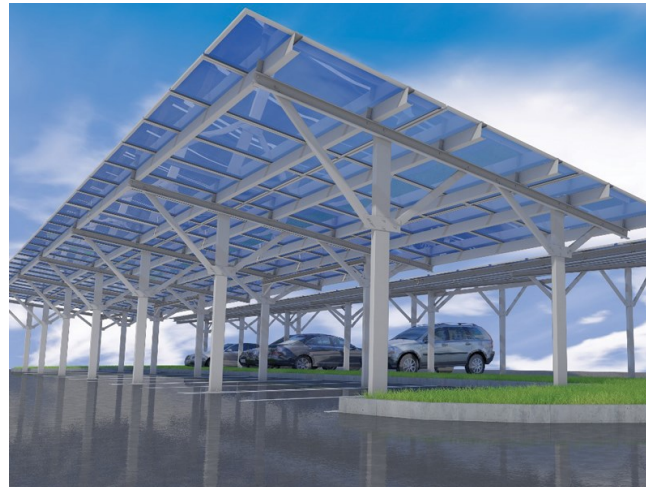
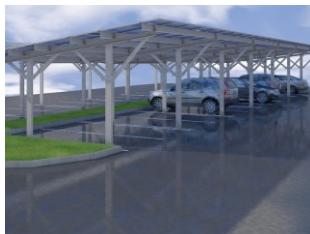
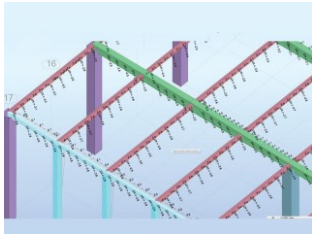
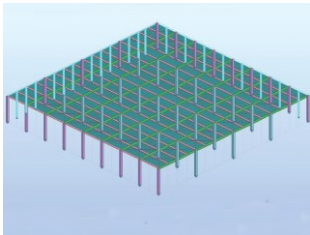
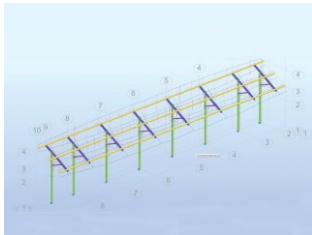
- solar 400 kW fix tilt
- solar 200 kW 2 axes tracker
- solar 400 kW carport
- wind 10 kW vertical blades
- storage 100 kW AGM LIFEPO4
- storage 15 KW LIFEPO4
- charger 150 kW
- charger 60 kW and panels installation



# Geotech

We provide structural design services for industrial constructions and photovoltaic or hybrid parks (PV-Wind- Storage) and geotechnical engineering services that include field investigations, studies, and geotechnical design.

Our certified experts carry out technical expertise and complete reports, based on written and drawn documents. Structural calculations are performed in 3D (Robot Structural Analysis).



# PEOPLE & TECHNOLOGY

Together with our colleagues from Germany, we are a team of engineers, electricians, technicians, project managers, economists, lawyers, human resources and communication specialists, skilled and unskilled workers. Parapet's Nuremberg office coordinates all activities in the photovoltaic parks installed in Germany, while the Cluj team covers the works locally and in the rest of Europe. We invest in people and in clean technologies. We pride ourselves with a fleet of top equipment for the execution of foundations.

## Ramming Machine

Force of impact: 15 kN  
Weight: 4,5 tones  
Maximum pile length: 4.390 MM



## Drilling Machine

Maximum drilling diameter: 202 mm  
Maximum pile length: 5.890 MM







**PARAPET**

## **Contact**

### **Romania**

office@parapet.ro

Tel. +40 371 372 277

### **Germany**

office@parapet.ro

Tel. +49 152 25288972

[www.parapet.ro](http://www.parapet.ro)