

We did not invent renewable energy. **Elektra Renewable Support Cernavodă**
But we do master it. **Power Plants Integrated Services**

Regional Approach Athens: Cooperation



GREENFIELD

OPERATIONAL

EPC Contractor



**24/7 International Dispatching
and SCADA Monitoring**

Design



Power Forecast Optimisation

Tendering



Energy Trading

**Execution, Grid Fine-Tuning
and Commissioning**



Commercial 3rd Party Interface



**Corrective and Preventive
Maintenance**



What we do?

- **Technical Consultancy**
 - **El Design, grid connection and technical conformity process**
- **Technical Management**
 - **Dispatcher Operative Management**
 - 24/7 SCADA Monitoring and Control; Curtailments
 - TSO and Grid Operators direct contact
 - **Operation and Maintenance**
 - Electrical installation troubleshooting, O&M
 - PV and Wind Power Plants troubleshooting, O&M
 - Wind Turbine Generation troubleshooting, O&M
- **Facility Management**
- **Commercial Management**
 - **Commercial operation**
 - **Power forecasts and energy trading strategies**

Advantage!

15+ years of experience

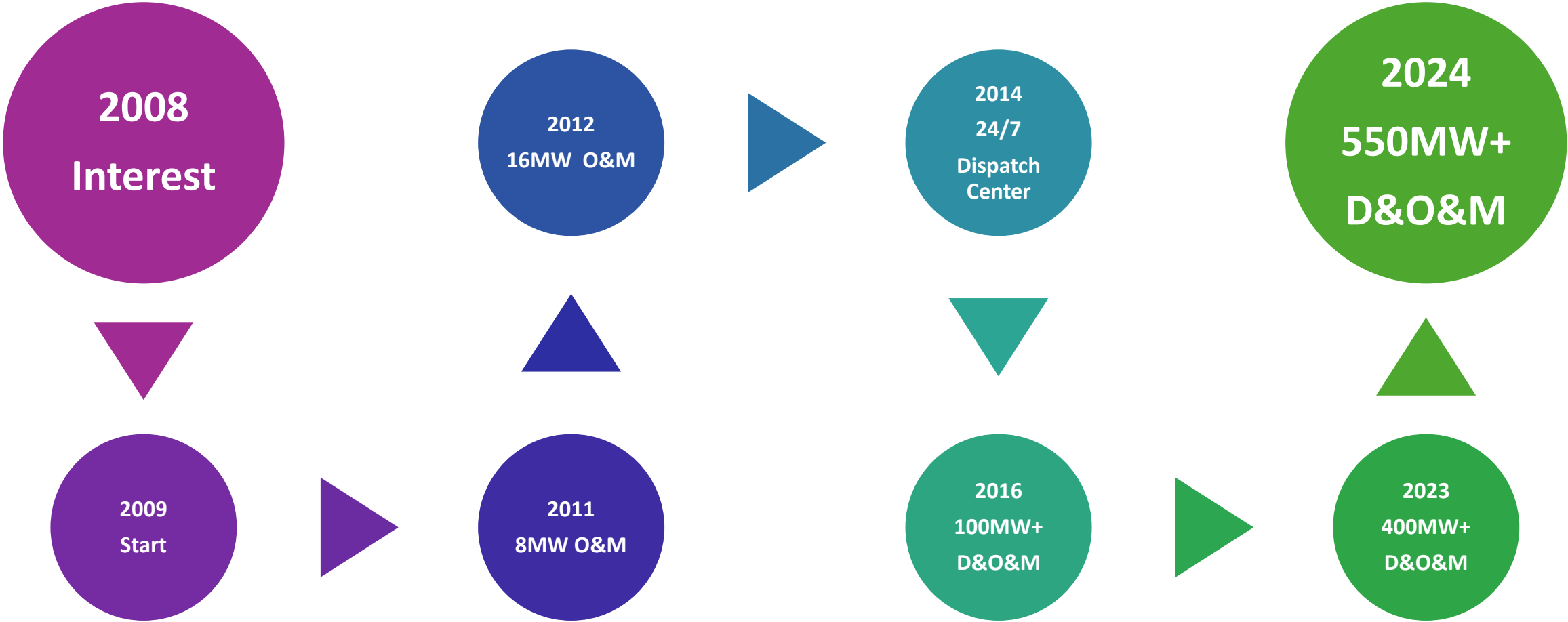
- Involvement in the renewable energy sector
- services portfolio was developed around demands
- authorized dispatch center
- energy income related services
- all services required for the efficient running of any power plant and electrical installation.



With whom?



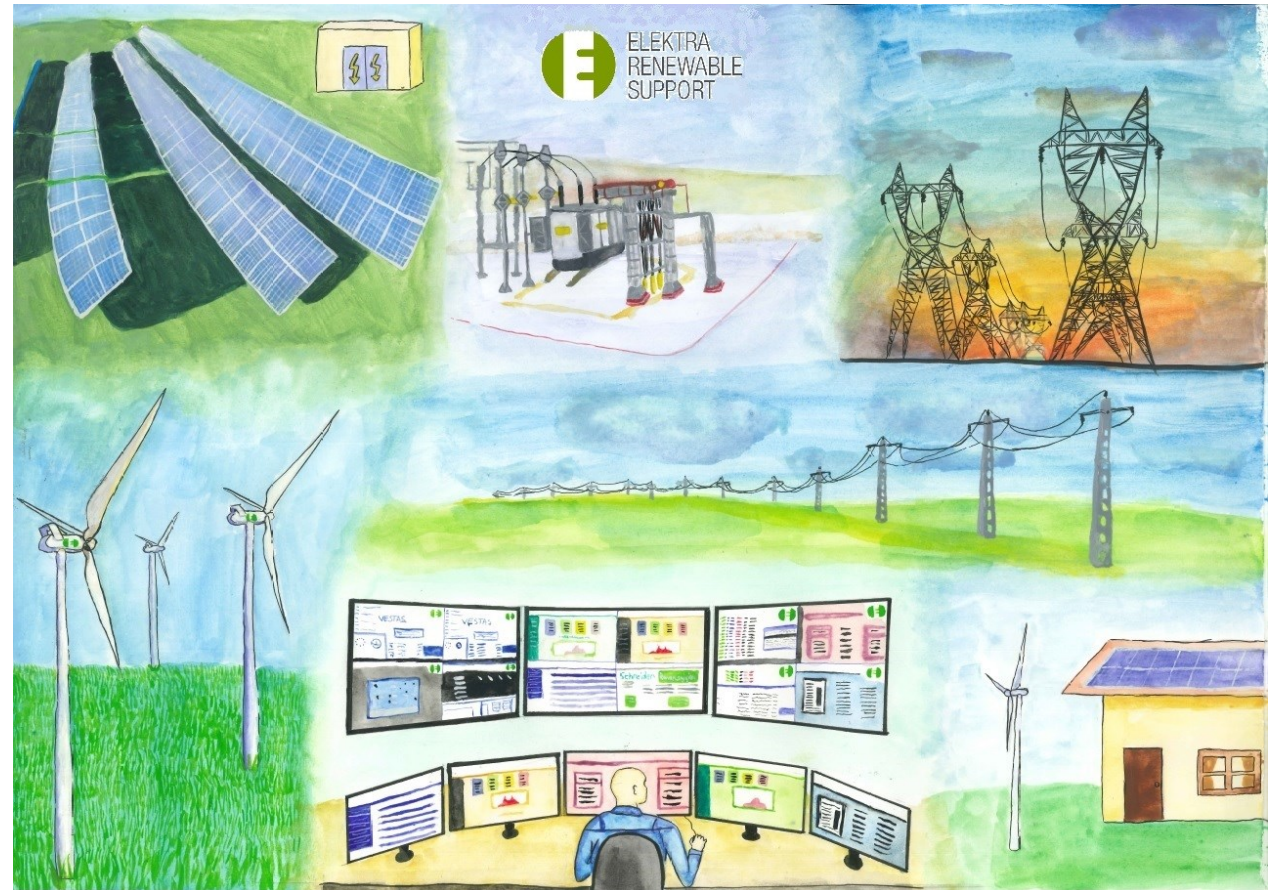
Our History



Community

- ✓ **New generation early training** and awareness of the renewable sector
- ✓ **Student practice programs** hosting with nationally recognized institutions
- ✓ **Green weeks** activities with local schools
- ✓ Student **participation** in our O&M activity.

Aiming to train future engineers and professionals, which we all strive for.



Main Partners



Regional Approach Athens: Cooperation

Classification of power-generating modules and power park modules

Significant category	IPTO and (UE) 2016/631	Transelectrica
	Voltage in the connection point U (kV) and the installed capacity P (kW, MW) of the power-generating modules / power park modules	
Category A	$U < 110 \text{ kV}$ and $0,8\text{kW} \leq P_{\text{max}} < 1\text{MW}$	$U < 110 \text{ kV}$ and $0.8 \text{ kW} \leq P < 1 \text{ MW}$
Category B	$U < 110 \text{ kV}$ and $1\text{MW} \leq P_{\text{max}} < 20\text{MW}$	$U < 110 \text{ kV}$ and $1 \text{ MW} \leq P < 5 \text{ MW}$
Category C	$U < 110 \text{ kV}$ and $20\text{MW} \leq P_{\text{max}} < 75\text{MW}$	$U < 110 \text{ kV}$ and $5 \text{ MW} \leq P < 20 \text{ MW}$
Category D	$U \geq 110 \text{ kV}$ or $P \geq 75\text{MW}$	$U \geq 110 \text{ kV}$ and $P \geq 20 \text{ MW}$ or $U \geq 110 \text{ kV}$ and $P < 20 \text{ MW}$ or $U < 110 \text{ kV}$ and $P \geq 20 \text{ MW}$

Thank You!

E-mail: elenapopescu@e-rs.ro

office@e-rs.ro

Address: Cernavodă, Constanța, Romania

3A Lt. Ion Mușat Street

Tel.: +40 241 239 223

Fax: +40 241 239 147

